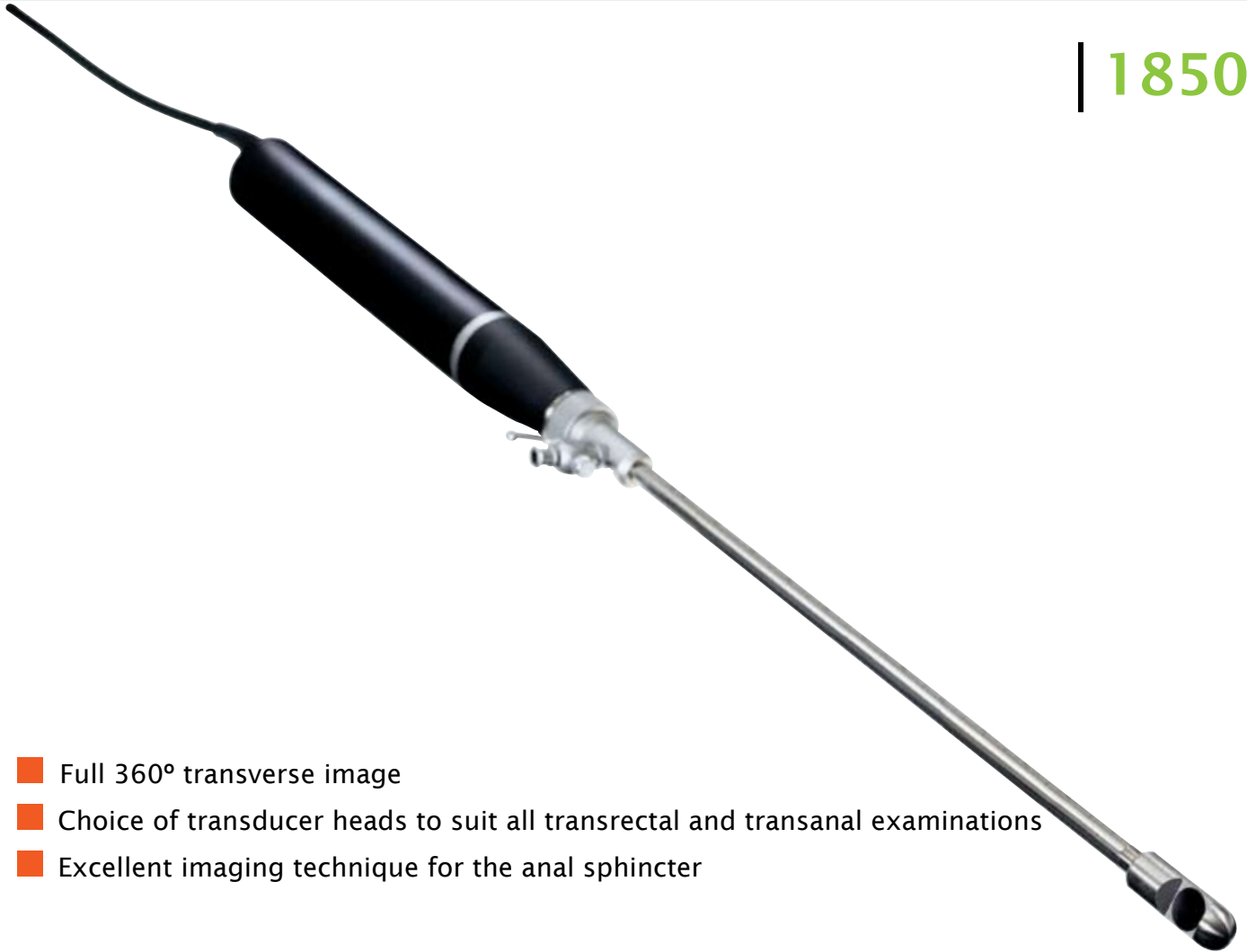


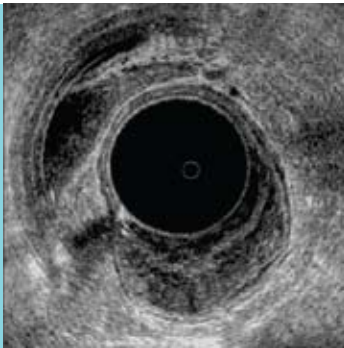


# The clearest view of rectal anatomy

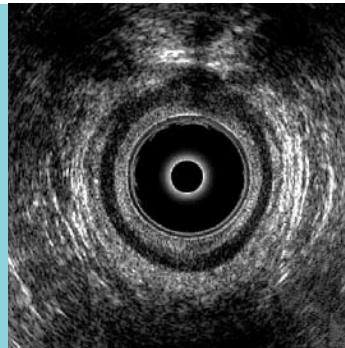
| 1850 |



- Full 360° transverse image
- Choice of transducer heads to suit all transrectal and transanal examinations
- Excellent imaging technique for the anal sphincter



*41 year old female. Large rectal adenoma.*



*Fistula with seton in a 26 year old nulliparous female anterior to the ventral EAS.*

The 1850 is one of the world's most versatile probes for transrectal examinations. The unique rotating shaft of Type 1850 gives you a full, 360° scan image - it's a complete, transverse view without having to move the handle.

**■ Preoperative penetration**

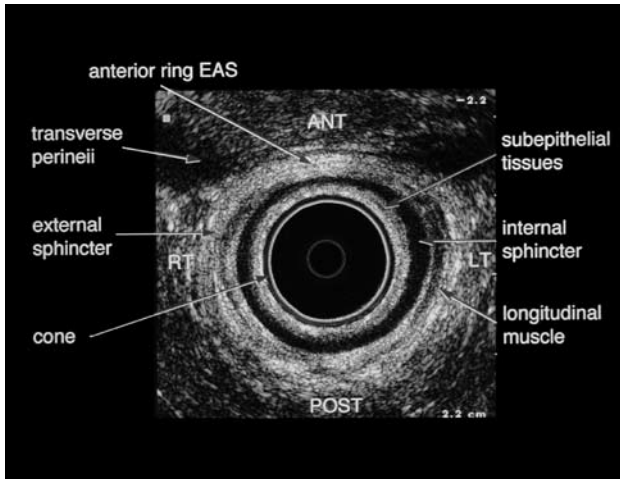
Patients with rectal carcinoma usually require surgery. 1850 is ideal for preoperative assessment of the tumor before the patient receives adjuvant therapy or, if the tumor is in an early non-invasive stage, local tumor excision or TEM.

**■ Increased post-operative control**

Many recurrences cannot be detected by digital rectal examination or rectoscopy. However, you can use 1850 to detect small recurrences at an early stage - this will increase the chances of curative surgery.

**■ Explaining anal incontinence**

Obstetric tears and ruptures of the anal sphincter often result in anal incontinence - even after initial healing. Because of the high image quality with 1850, sphincteric defects are clearly seen and the anal sphincter can be surgically reconstructed.



*The normal anal sphincter complex*

**Specifications**

Frequency range  
5 - 10 MHz

Focal range (typical)  
10-16 mm

Sector angle  
360°

Disinfection  
Immersion

Weight  
600 g

Length  
570 mm

Transducer tips  
8539: 5-10 MHz, diameter 13 mm  
6004: 10.0 MHz, diameter 13 mm  
6005: 5-10 MHz, diameter 7 mm



**■ World Headquarters:**

Mileparken 34 · DK-2730 · Herlev · Denmark  
Tel: (45) 4452 8100 · Fax: (45) 4452 8199 · [www.bkmed.com](http://www.bkmed.com)  
A wholly owned subsidiary of Analogic Corporation